



<b>Name of Organisation</b>	Canning River Eco Education Centre (CREEC)	
<b>Location/Contact Details</b>	<b>Physical Address</b>	Cnr Kent St and Queens Park Rd Canning River Regional Park Wilson WA 6107
	<b>Postal Address</b>	Locked Bag 80 WELSHPOOL WA 6986
	<b>Phone:</b>	08 9461 7160
	<b>Contacts:</b>	Tracy Lyon & Noeleen Edwards Administration & Community Liaison Officers <a href="mailto:creec@canning.wa.gov.au">creec@canning.wa.gov.au</a>
	<b>Website:</b>	<a href="http://www.canning.wa.gov.au/creec">www.canning.wa.gov.au/creec</a>

The **Canning River Eco Education Centre (CREEC)** is located on the banks of the Canning River within the Canning River Regional Park. The Park is home to a wide diversity of wildlife and provides a unique 'outdoor classroom' for discovery and learning.

Come and explore this local wetlands environment through WA curriculum-based interactive excursions for K - Y12 students.

**Purpose of the Excursion**

School excursions to CREEC encourage students to interact with the natural environment and investigate the ways in which animals, plants and people interrelate in local places. Details on the range of programs are located at [School Programs](#)

CREEC also has a public gallery with environmental displays and live animal exhibits that showcase the local Canning River wetlands and surrounding environment. Students are welcome to wander and interact with displays during their visit to CREEC.

School excursions cater for school age groups from Kindergarten through to Year 12 and are adapted to suit student abilities. All programs and associated learning materials are linked directly to the Western Australian curriculum. The City of Canning has partnered with [Nearer to Nature](#) to deliver the CREEC school programs.

Student activities take place both indoors and outside within the Canning River Regional Park. Although some activities involve students collecting water samples from the banks of the river, an excursion to CREEC is not considered a Water Based Excursion as per Section 19: Water-based Activities of the Department of Education's *Outdoor Education and Recreation Activities Policy*.

## Environment

The Canning River Eco Education Centre (CREEC) is located in the Canning River Regional Park at the historic Kent St Weir on the banks of the Canning River.

The Canning River is approximately 100km long and flows from the Darling Scarp as a major tributary to the Swan River. The surrounding Canning River Regional Park represents significant wetlands which encourage local ecological diversity as well as providing a refuge for the numerous migratory birds that visit the area each season.

At Kent St the river has been interrupted by the construction of a weir which is adjacent to CREEC. This weir was first built in 1927 when farmers wanted to capture freshwater upstream for their crops and animals. This weir provides students with the unique opportunity to compare and contrast two aquatic environments both upstream and downstream of the weir.

CREEC has a large classroom, meeting room, public gallery, kitchenette and toilet facilities situated on the premises. Outdoor facilities close by include shady lawn areas, free gas BBQs, gazebo and picnic tables. Wheelchair access is available throughout the Centre and most areas of the Regional Park, however some activities may require extra adult assistance (We recommend you discuss this with the Education Officer prior to booking).

**\*All teachers are invited to tour the Centre/facilities prior to their excursion.**

### Venue Hire For Teachers

CREEC offers modern room facilities with views across the Canning River Regional Park that are suitable for staff workshops/professional learning. CREEC Education Staff can support professional learning sessions for teachers on request. Venue hire enquiries can be made at [creec@canning.wa.gov.au](mailto:creec@canning.wa.gov.au) or on 9461 7160.

The Canning River Café is located at CREEC. It is open 7am to 3pm, 7 days a week. Students can purchase drinks, icecreams etc under supervision from teachers. The Canning River Cafe is currently not catering for large school lunch orders.

Wilson Lagoon is 5 minutes walk from CREEC and can be accessed easily by schools. This natural wetland is an important refuge for birds and has a bird hide for viewing of wildlife.

## SITE CONSIDERATIONS

**PUBLIC OPEN SPACE:** The adjacent Kent St Weir Park and Canning River Regional Park are open public spaces that are utilised by members of the general public. Please ensure your students are supervised at all times.

**BUSHFIRE:** The Canning River Eco Education Centre (CREEC) is adjacent to the Canning River Regional Park, which is made up of 266 hectares of bushland/grassland/recreation area. In the case of bushfire it is essential that CREEC Staff can contact School Staff at any time during your excursion. **Please provide a contact name and mobile phone number (that is operational on the day) to CREEC Reception on arrival.** Refer to the CREEC Emergency Response Plan provided for more information.

**SNAKES:** Venomous snakes (i.e. tiger snakes and dugites) inhabit the adjacent Regional Park and are occasionally sighted in the excursion areas. They are particularly active from September to April. Students are required to keep on the sealed pathways at all times.

**ALGAL BLOOMS:** At certain times the Canning River is susceptible to algal blooms. As certain types of algae can cause potential skin irritation/reactions and/or other health illnesses/effects, the *Department of Health WA* recommends people do not engage in water contact. Algal activity alerts are issued via media releases, *Dept of Health WA* website as well as displaying signage at affected river sites.

In the event of an algal alert at the Kent St Weir site teachers who have booked a CREEC excursion will be advised of alternative excursion arrangements.

For more information about algal blooms visit

[https://www.healthywa.wa.gov.au/Articles/A\\_E/Algal-blooms](https://www.healthywa.wa.gov.au/Articles/A_E/Algal-blooms)

### Transport

Transport to and from CREEC is to be arranged by the school. There are ample FREE parking facilities for cars, buses and trailers. Disabled parking is also available.

Please note that public transport facilities to CREEC are limited due to its location within the Regional Park. The closest train station is Cannington. For journey planning from your school by bus visit the Transperth journey planner website at

<http://www.transperth.wa.gov.au/Home/JourneyPlanner.aspx>

### Students' Capacity

CREEC offers a number of K - Y12 programs that allow students to learn about the local environment in interactive ways.

Programs may take one of three formats:

1. **Guided Core Program:** Programs are between 90-120 minutes in duration and are facilitated by suitably qualified Education staff. Core programs are available for booking throughout the school year.

2. **Self-Guided Program:** Self-guided programs are tailored for different year levels and usually take school groups approximately 60 minutes to complete. School staff are responsible for the coordination of these programs and the supervision of students. Teachers must book self-guided programs in order to reserve equipment.

3. **Special Events.** Guided program of events that are facilitated by qualified Education staff. Special Events take place on specified dates.

The special needs of students are considered as part of *CREEC's Disability Access and Inclusion Plan*. Please advise if you have any students with special needs so we can strive to maximise the benefit of their visit.

### Supervisor/Supervisory Team

It is the responsibility of the school to develop a supervisory team that meets their specific requirements in line with the recommendations below.

It is the role of CREEC staff to facilitate suitable activities and provide an engaging learning experience for all students involved. The overall duty of care, including informing the CREEC staff any special student requirements/medical conditions, is the responsibility of the school staff/teachers and assistance in supervising student activities is expected at all times.

The school supervisory team is asked to prepare students for an excursion to this venue using the briefing information provided within this document and must accompany the students throughout the visit to actively monitor behaviour and intervene as necessary.

## External Provider Information

### Current Accreditations and Qualifications

Education Officers hold tertiary qualifications in Education and/or Science and are experienced environmental educators.

### Working with Children Checks

All Education, Administration staff and Volunteers have Working with Children Checks. Please contact CREEC on **9461 7160** if a WWCC reference number is required.

### Public Liability

CREEC complies with the public liability insurance requirements of the Department of Education excursion. Under the City of Canning, CREEC has full Public Liability Insurance to the value of \$100,000,000 provided by Local Government Insurance Services (LGIS). This insurance contains clauses to cover both loss and damage to property as well as personal injury. It does not however, cover loss of personal belongings so visitors are reminded of their responsibility in looking after their personal property.

A copy of the certificate of currency is available on request.

## Supervision Strategies

It is the responsibility of the school to develop a supervisory team that meets their specific requirements. The ratios may vary according to the needs of your students. To assist you with meeting these requirements all adults accompanying schools groups are FREE of charge. To assist with supervision requirements, we have outlined some guidelines as follows:

Year Level	Adult/student ratio
Kindergarten -Yr 3	1:5
Year 4-7	1:10
Year 8-12	1:10

**Student supervision, conduct and belongings remain the responsibility of their teachers at all times.**

## Identification of Excursion Participants

As the majority of student activities are conducted outside it is highly recommended that all students wear their school uniforms and closed in shoes. As the Regional Park is utilised by members of the general public it is important that all students can be easily identified. The use of name tags, particularly with younger students, is helpful during activities.

We also request that attendance records be kept so that in an emergency there is an accurate list of student numbers participating in the programs.

## Communication Strategies

CREEC has one phone in the Reception Area and the Education Officer carries a mobile phone at all times. **Please provide a contact name and mobile phone number (that is operational on the day) to CREEC Reception on arrival** It is also essential that school staff exchange

contact phone numbers across school groups so they can be in contact with all school groups at all times.

In the event of unfavourable weather conditions CREEC will inform the school of any changes to the running of programs or arrange an alternative day for visitation. It is important to plan the excursion with the content of the program in mind and as such students should be prepared for weather conditions.

CREEC Education Staff will conduct a site briefing to all attending adults and children at the commencement of the school program.

**Please contact the CREEC Centre Coordinator on 9461 7160 if you wish to arrange a pre-excursion site tour.**

### **Emergency Response Action Plan**

Schools are required to have their own Emergency Response Action Plan pertaining to the particular needs of their students. A First Aid Kit is available from the CREEC's Reception Area; however the school supervisory team should have access to a First Aid Kit during the length of the excursion.

CREEC has a documented emergency response action plan in place. Refer to **CREEC Emergency Response Plan** for

- Emergency Evacuation Procedures
- Emergency contacts/local emergency care facilities

It is essential that CREEC Staff can contact School Staff at any time during your excursion.

**Please provide a mobile phone number (that is operational on the day) to CREEC Reception on arrival.** In the event of an emergency the Education Officer will direct all staff, students and supervisors to the designated assembly areas where school staff are advised to take an attendance role. CREEC staff should be alerted immediately if a student or other group member is missing so a controlled search of the premises and surrounding area can be conducted safely.

We require that teachers and other school staff are familiar with the CREEC emergency evacuation procedures prior to the excursion. Assembly areas are located in different areas of the Regional Park and the Education Officer will chose the appropriate area depending on the emergency. Please see the attached document for an associated map for emergency assembly points at CREEC.

### ***Emergency Contact Numbers***

#### ***Police/Fire/Ambulance***

Emergency **000**

Cannington Police Station    1325 Albany Hwy  
Cannington, WA 6107  
(08) 9451 0000

#### ***Doctors Surgery***

Carousel Medical Centre    Unit 1-7 9 Pattie Street  
CANNINGTON WA 6107

(08) 9258 1000

**Hospitals/Emergency Care**

Royal Perth Hospital      197 Wellington St  
East Perth WA 6001  
(08) 9224 2244

**Other Relevant Details**

**Please contact CREEC on 9461 7160 if you wish to arrange a pre-excursion site tour or for any enquiries relating to your visit to CREEC.**

Please refer to relevant attachments (2) at the end of this document.

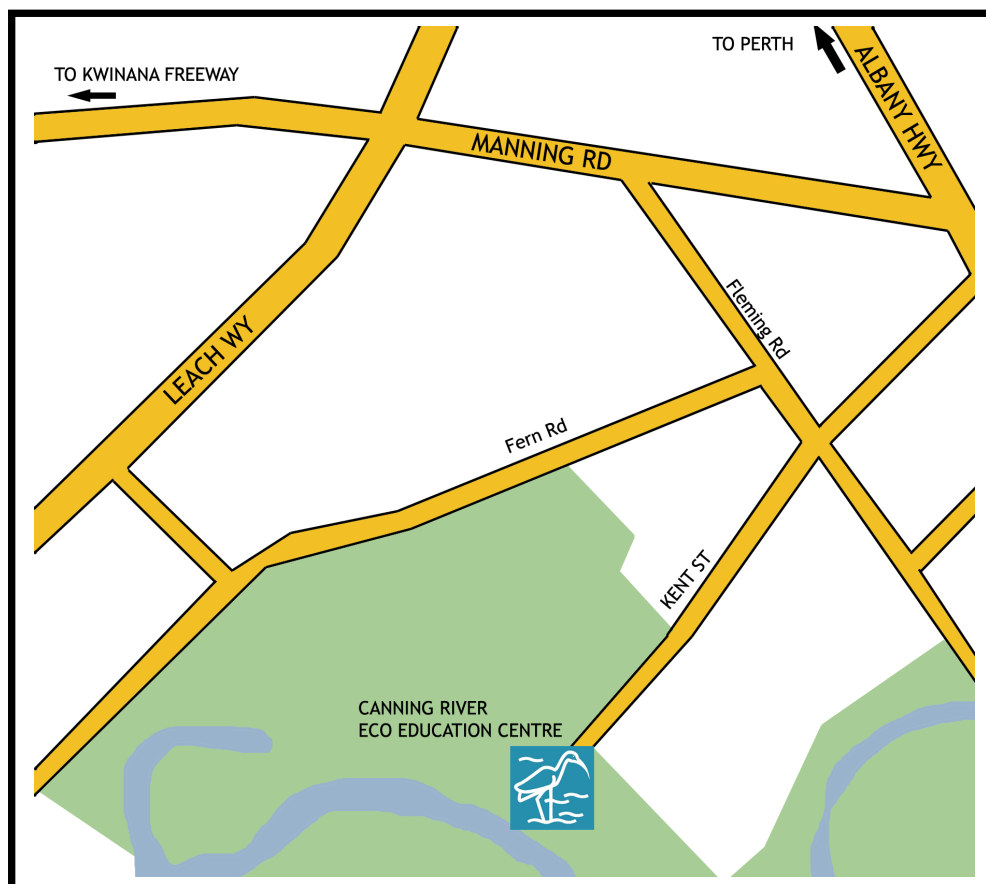
**This information is valid until 31 January 2023**

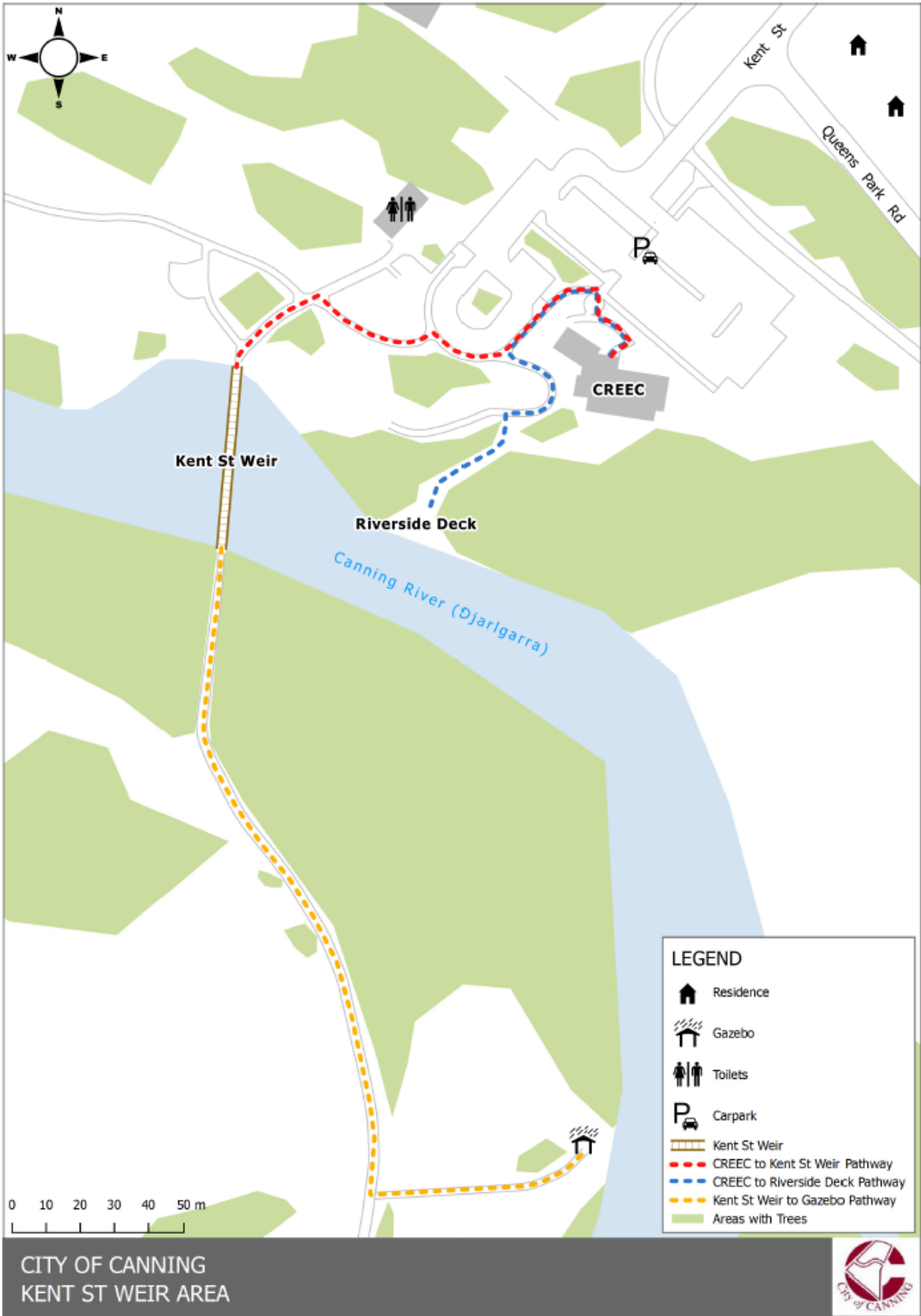
**Attachment 1:** Canning River Eco Education Centre Location Map

[Google Maps - CREEC location](#)

**Attachment 2:** CREEC and Immediate Surrounds Map

**Attachment 3:** Canning River Eco Education Centre Emergency Evacuation Plan





# Evacuation Diagram

Canning River Eco Education Centre CREEC and Canning River Café  
 Corner Kent St and Queens Park Road  
 Wilson



**EMERGENCY INFORMATION**

In case of emergency contact:

- Police, Fire or Ambulance (life threatening) 000
- Police (non-urgent) 131 444
- SES 132 500

When directed by your Warden:

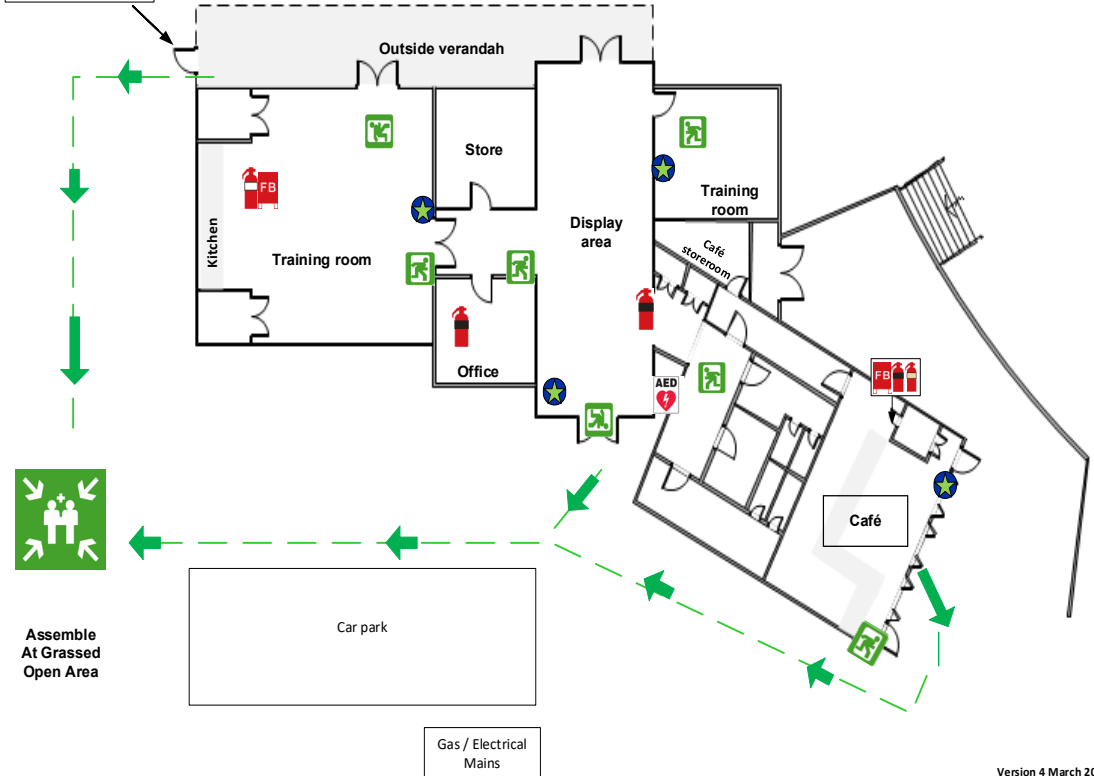
- Evacuate the building via the nearest safe exit
- Proceed to the assembly area, or as directed by your Warden or Emergency Services
- Remain at the assembly area until directed by your Warden or Emergency Services

Do not re-enter the building until instructed by your Warden or Emergency Services.

NOTE: This exit is not suitable for pram or wheelchair access / egress

**Legend**

	Powder Extinguisher
	Co2 Extinguisher
	Wet Chemical Extinguisher
	Fire Blanket
	Auto External Defib
	Emergency Exit
	Assembly Area
	Emergency Walk Way
	"You Are Here"



Version 4 March 2019