



COMMUNITY INFRASTRUCTURE STRATEGY:

PUBLIC LIBRARIES



CITY OF CANNING





PUBLIC LIBRARIES

Public libraries are built community facilities that provide access to a range of physical and digital resources and services, including book collections, public computers, learning programs, and meeting spaces.

The purpose of public libraries has transitioned over time, from a traditional model focused on providing access to resources in a variety of media to the more contemporary model that offers opportunities for social interaction and shared cultural experiences. Now more than ever, libraries act as a third space for community interaction, informal and formal learning, and creative endeavour.



CURRENT DELIVERY

The City currently operates four library services totalling 5,521m². These deliver a diverse range of library and learning programs, with over 350,000 visits per annum. Other library services and spaces are made available to our community through local schools and access to university libraries at both Curtin and Murdoch. However, these spaces are limited to the students they serve.

Riverton Library operates as a regional library, drawing from a wide catchment area that includes Riverton, Shelley, Rossmoyne, and parts of Willetton and Parkwood.

Willetton Library acts as a District library, servicing a population catchment of approximately 20,000 from Willetton, and parts of Leeming and Riverton.

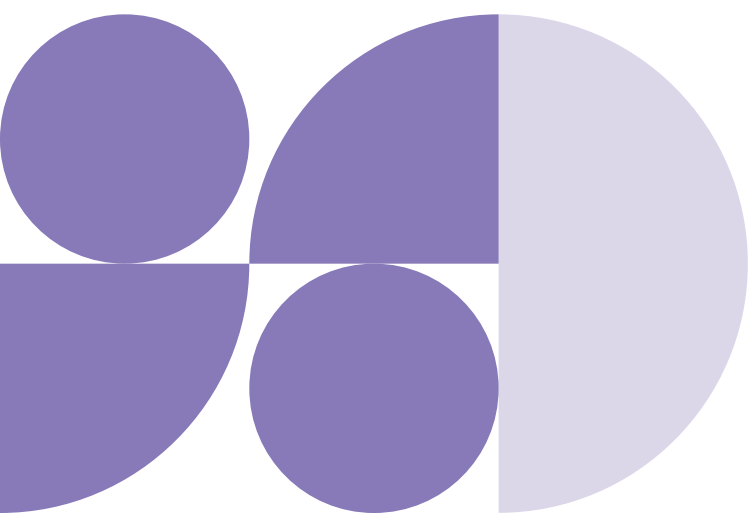
Cannington Library is also considered a District facility, servicing a population catchment of nearly 30,000 from the residential areas of Bentley/St James, Queens Park, Cannington, East Cannington and Wilson.

The Hillview Intercultural Community Centre is a neighbourhood facility, servicing a population catchment of approximately 10-12,000, including the areas of Bentley/St James, Victoria Park and South Perth.

The Canning Vale residential community has a population of 10,406, which is anticipated to decrease by 3.9% to 2041. This community is physically distinct from other areas of the City, due to the major transport routes (rail and road) and large industrial area that sits within it. Canning Vale residents predominantly connect to the library services in the neighbouring City of Gosnells, approximately 3km from the City of Canning boundary.



Facility	Hierarchy	Components	Strength	Weakness
Riverton Library 67 Riley Road Riverton	Regional	1997 Build 2018 refurbishment Size 2590m ²	Integrated with Leisureplex Central location, with close proximity to public transport, shopping centre and local school Accessibility Flexible, multi-purpose space Serves as a 'central' library providing additional services to support other library sites	Lack of visual prominence
Willetton Library 37 Burrendah Blvd, Willetton	Neighbourhood	1987 Build 2021 refurbishment Size 1120m ²	Flexible, multi-purpose space Close to public transport Well utilised Positioned adjacent to Willetton Town Centre	Stand-alone facility Restricted opening hours (Closed Wednesday, Saturday afternoon)
Cannington Library Cnr Wharf & Sevenoaks St, Cannington	Neighbourhood	2012 Build 1000m ²	Close to public transport Integrated with other services (Leisureplex) Location	Lack of flexible multi-purpose space Limited pedestrian access Lack of visual prominence
Hillview Intercultural Community Centre 1-3 Hillview Tce, Bentley	Specialist	2021 Build 811m ²	Flexible, multi-purpose space Targeted resources & services Integrated with other services	Limited resource space (2500 items ~ 10% of neighbourhood level) Limited location prominence Limited car parking



CASE STUDIES



RIVERTON LIBRARY OVERVIEW

Riverton Library is a highly valued and activated community facility, drawing customers from across the local government area and beyond.

The busiest of all four library sites, this facility is co-located with the Riverton Leisureplex an active sporting reserve and is serviced by a large on-site car park. These facilities are in close proximity to a large neighbourhood level shopping centre and local primary school, and is positioned on the suburb's main road, enabling easy access to public transport.

The library boasts a large open flexible central space, enabling multi-purpose use for quiet study, collections and active and passive program areas. A number of breakout options are available with a large studio meeting room, medium sized junior room, and a small private meeting space. Customers can also access an external outdoor courtyard.

Riverton Library holds the largest proportion of the City's resource collection, with around 45,000 items held on-site. The Library also has the highest levels of activation, both through formal learning programs and its use by informal community groups, and for study sessions and community gatherings.



WILLETTON LIBRARY OVERVIEW

Willetton Library is a much-loved community resource, highly valued by the local community.

Located on Burrendah Boulevard, the library is positioned adjacent to a child health clinic, and opposite a childcare centre and park. It is also in close proximity to a Neighbourhood shopping centre.

Refurbishment of the building in 2021 repositioned the entrance to face Burrendah Precinct, connecting pedestrian access to the sport facilities, eateries, and community buildings (including Youth Centre) located in this area. Car parking on-site is sufficient and adjacent to additional car parking provisions for the shopping centre.

Willetton Library has been refreshed as an open space, with flexible use of various areas by utilising the book shelving as 'room dividers' for the open plan area. Facilities include a semi-private youth gaming area, private medium and small meeting rooms, and a small outdoor courtyard.

Willetton Library's customer base includes a significantly larger than standard level of use by high school students. The teenagers are studious and engage in using the spaces for informal study sessions. This library has high levels of readership, reflecting that access to books is still a central feature to this library's purpose.



CANNINGTON LIBRARY OVERVIEW

Cannington Library is integrated within a multi-storey facility that includes the Leisureplex, library and function rooms, wrapped around an central paved courtyard.

The facility is positioned on the corner of Wharf and Sevenoaks Street, with limited access from a north eastern direction due to the adjacent railway. This railway is anticipated to be elevated under METRONET plans, which will provide new opportunities to enhance connection between this facility and the adjacent suburbs of Queens Park and East Cannington. Sevenoaks High School and an active sporting reserve are adjacent sites.

Internally, Cannington Library consists of a long open hall with traditional library shelving, creating a mostly fixed, immovable feature. For an integrated facility, there is a lack of connection with the Leisureplex facility, due to the customer entry/exit access being off the external courtyard. There are no closed meeting room spaces available. However, there is an opportunity to correct these aspects through minor renovations to create a central customer service point for the whole facility and meeting room spaces.

Customers of the Cannington Library come from diverse range of cultures, reflecting the diversity of neighbouring suburbs. Free access to public computing facilities and Wi-Fi at Cannington is seen at much higher levels compared to other library locations.



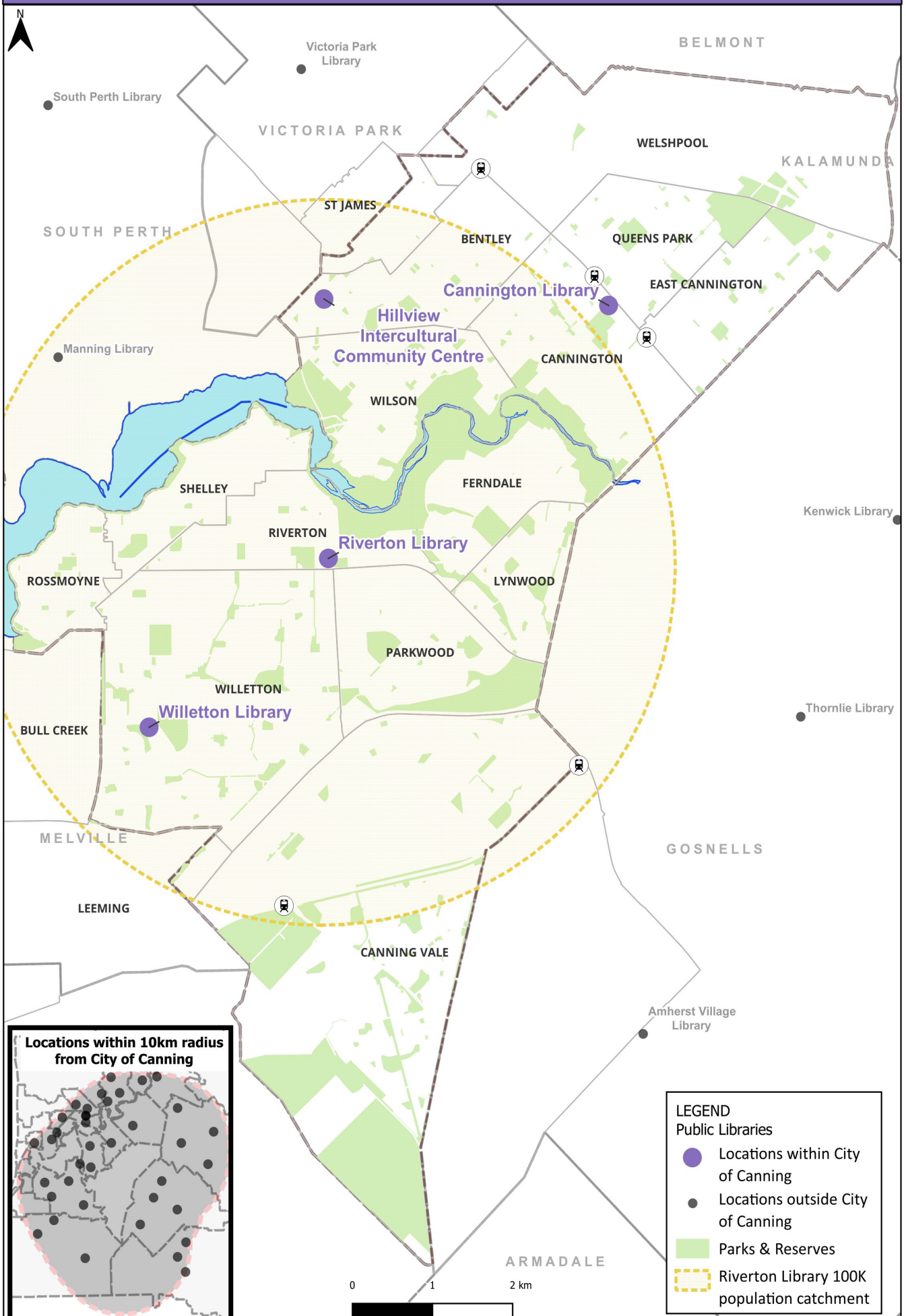
HILLVIEW INTERCULTURAL COMMUNITY CENTRE OVERVIEW

Hillview Library is located within the entry foyer space of the Hillview Intercultural Community Centre. Library services such as public computer access is provisioned through the ICT lab and program delivery occurs within meeting room spaces, which are also activated through community program delivery.

Hillview Intercultural Community Centre is located within the 'Hillview Hub', which includes the adjacent Hillview Park, local shopping strip and road-scaped areas. The areas surrounding the centre have high levels of cultural diversity and are among the highest in Canning. Given the intercultural aspect of Hillview Hub, this centre attracts usage at a Regional level, from across the Perth metro area, and serves as a 'South of the River' District level facility.

To foster and enhance the intercultural focus of the centre, a specialist collection of resources has been curated. This collection reflects global authorship and has high levels of languages other than English and bilingual resources, as well as English language learning and newcomer materials.

PUBLIC LIBRARIES



INDUSTRY PROVISION RATES AND BENCHMARKING

Public libraries have well-developed provision standards including the Guidelines, Standards and Outcome Measures for Australian Public Libraries, developed by the Australian Public Library Alliance (APLA) and the Australian Library and Information Association (ALIA), and People Places: A Guide for Public Library Buildings, developed by the State Library of New South Wales and endorsed by ALIA and APLA.

For Regional or Sub-Regional facilities, the recommended rate of provision is 1:100,000+, with a recommended ground floor area of 28m² per 1,000 people, plus 20% circulation space.

For District level facilities, the recommended rate of provision is 1:35,000-65,000, and for Sub-District facilities, it is 1:20,000-35,000.

For both District and Sub-District facilities, the

recommended ground floor area is 39m² per 1,000 people, plus 20% circulation space.

Parks and Leisure Australia, Western Australia (PLA WA) also provide very basic guidelines for libraries, as outlined below. However, the APLA and ALIA endorsed guidelines are the most commonly used within the industry.

Provision Standards for Libraries

Hierarchy	APLA and ALIA	PLA WA Guidelines
Regional or Sub-Regional Library	1:100,000+	1:50,000-150,000
District and Sub-District	1:35,000 – 65,000 to 1:20,000-35,000	1:20,000 – 50,000
Neighbourhood Library	No provision	1:6,000-15,000

CURRENT BY CANNING

The City’s current library space provision indicates that a City with a population of 100,000 is well catered for with the number of library services, including one Regional library (Riverton), two District libraries (Cannington and Willetton), and one Sub-District or Neighbourhood library (Hillview).

When measured against the APLA’s Public Library Standards, the City’s existing library provision of more than 5000m² exceeds the minimum standards for our current population of 99,351 and forecast population of 124,955 by 2041. These standards recommend a provision of 4945m² for a population 125,000.

TRENDS

The national and international library landscape continues to evolve, with current trends indicating:

CHANGING INFORMATION LANDSCAPE

- An increasingly networked society, where access to information and content is unrivalled. Libraries have a critical role to play in supporting our communities to navigate this changing landscape – from helping people to access information, to navigating the increasing amounts of data and information, and ultimately helping them to make meaning out of the information they obtain. Additionally, there is a role to play in supporting our communities to navigate the myriad of online Government 2.0 platforms, including MyGov, ServiceWA etc.

FLEXIBILITY

- Changing study habits and the increasing opportunity to work from home, giving libraries the opportunity to consider their physical spaces and how these can be better utilised. More and more library spaces are being used for collaboration and programming, while still maintaining a balance of space that fosters independent study and quiet contemplation. Library spaces are being transformed into flexible hubs that can accommodate a variety of uses.

LIBRARIES AS A THIRD PLACE

- Libraries commonly becoming spaces for informal community gatherings that are inclusive, local and help to bring people together, promoting community cohesion and social inclusion. Libraries are increasingly expected to be a place where people can spend time outside their home, school and work spaces.

LIBRARIES AS LEARNING HUBS

- Contemporary libraries world-wide, much like the City, are increasingly emphasising lifelong learning, with programs and collections to enable a range of interests, skill levels and learning abilities, from preschool to post-retirement. To enable this shift, new spaces, resources and skills are required.



THE FUTURE

While it is likely that the growth of the City Centre, and other identified growth areas (i.e. Queens Park, Bentley etc.) will see increasing visitor numbers at each of the City's existing libraries, it is unlikely that the City's overall population growth will require any additional standalone library facilities over the next 10 years.

Library visitation numbers have remained largely static over the past five years, with some decline during COVID-19 restrictions.

The refurbishment of the Riverton and Willetton libraries over the past four years means the City is well serviced by contemporary library spaces and can meet the broad needs of our community.

However, Cannington Library would benefit from a similar refurbishment, as a means of improving functionality and maximising its co-location with the Leisureplex.

PROVISION STANDARDS

Based on PLA WA guidelines, coupled with best practice and current provision rates, the proposed hierarchy for the City of Canning has been developed:

- Maintain current library provision (i.e. 5,500m²)
- Encourage continued flexible use of library spaces



CONSULTATION FINDINGS

This Type received 15 responses, all currently utilising this infrastructure, 12 from within the City. There are three strategic directions/recommendations proposed and all were supported.

Summary of Consultation	
Survey Questions	Results
Surveys Completed	15
From a suburb within the City of Canning	12
Already using Libraries in Canning	15
Addition consultation activities specific for this Type	Youth Consultant Network Workshop Cultural Ambassadors Huddle

Survey Response Results

	Support	Neutral	Oppose
Strategic Direction 1 - Current provision rates for public library services are sufficient to adequately serve the Canning community now and into the future.	7	4	4
Strategic Direction 2 - The City will maintain current library infrastructure too meet current and predicted future needs of the Canning Community.	7	5	3
Recommendation 1 - In the context of any future planning considerations for the Cannington Library and Leisureplex site, develop a business case to improve functionality of Cannington library through internal renovation and refurbishment, seeking to maximise co-location and shared use opportunities.	10	1	4

KEY THEMES

There was minimum feedback on the infrastructure provision itself, with greater feedback on services provided.

However, the following has been captured through a review of the responses received:

- The perceived view that library service would become more in demand with the growing multicultural community in the City of Canning.
- There is a call for designated quiet zones for concentration and separate areas for interactive and noisy activities.

KEY FINDINGS

That there was high levels of alignment between the Strategic Directions & Recommendations developed by the City and the respondents.

CONSULTATION RECOMMENDATIONS

1. No changes to the Strategic Directions
2. No changes to the Recommendations

STRATEGIC DIRECTION



Current provision rates for public library services are sufficient to adequately serve the Canning community now and into the future.



The City will maintain current library infrastructure to meet current and predicted future needs of the Canning Community.

RECOMMENDATION



In the context of any future planning considerations for the Cannington Library and Leisureplex site, develop a business case to improve functionality of Cannington library through internal renovation and refurbishment, seeking to maximise co-location and shared use opportunities.





